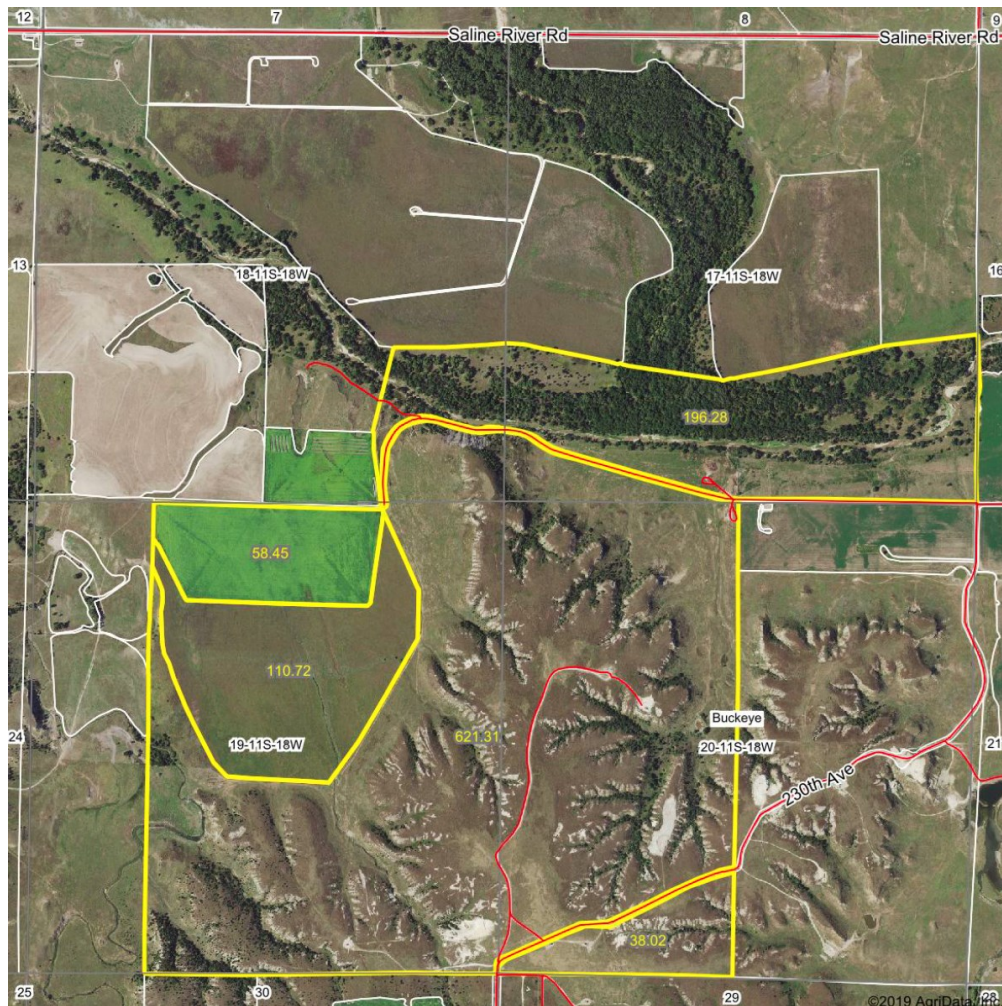


Sealed Bid Auction - 1,024± Acres of Hunting Land, Pasture, CRP & Mineral Rights in Ellis County, Kansas

Event Description



Live only

 **Fri, Jun 28, 2019**

 **3:00 PM CDT**

611 E. Iron Ave., Salina, KS, 67

CONTACT US



Curt Marshall

Owner / ALC / Auctioneer

 (785) 826-0824



<http://www.cmarshallauctioneer.com>

 cmarshall@uccrossroads.com

Address:

611 E. Iron Ave., Salina, Kansas, 67401

ABOUT THE PROPERTY

Curt Marshall, Terry Zimmer & Brian Rose of United Country - Crossroads Auction & Realty of Salina, Kansas are offering for sale via sealed bids 1,024± Acres of Hunting Land, Farmland & Pasture including 1.4-Miles of the Saline River in Ellis County, Kansas. This land is located 14.5-miles northwest of Hays, Kansas. This land features 110± acres of CRP, 58± acres of farmland, and 856± acres of pasture, timber & waterways for a total of 1,024± acres. This land is owned by Frisbie Investments, LP and it has been maintained by the same tenant for 50+ years. The tenant's written lease expires on April 30th, 2020, so possession of the land will be on May 1st, 2020. The Buyer will receive 65% of the 2020 CRP Payments (\$2,961.77). This property will sell subject to seller's confirmation.

The producing mineral rights for this property, along with the mineral rights underneath the adjoining 850± Acres that was previously sold, are being packaged together along with the mineral rights underneath 28± Acres in Saline County, KS. All Potential Bidders should make their bids for Tract #1 (1,024± Acres of Surface-Rights listed above), Tract #2 (previously mentioned Mineral Rights package), or Tract #3 (Tracts #1 and #2 Combined). Interested Mineral Buyers will need to contact us and we can send out all the detailed Mineral Information (financials and rendition sheets) after signing a Non-Disclosure Agreement.

For more auction information, [CLICK HERE!](#)